

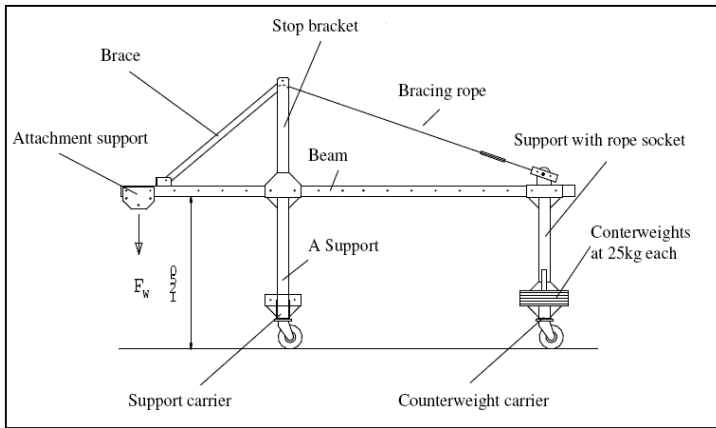
GEDA[®]-AB 650

Suspended Working Platform

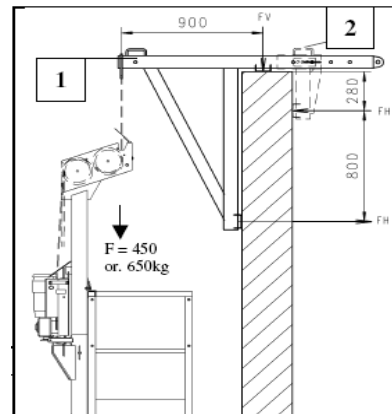
made
in
Germany



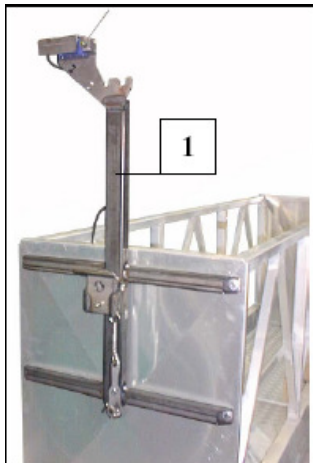
- Automatic levelling and limit switches
- Easy to store weight of winch just 55 kg
- Overload protection
- Safety brake in case of rope failure
- Over speed brake included
- Possible enlargement up to 14 m length
- 1 central control
- Power socket 230 V
- Payload up to 1,000 kg
- Height up to 180 m (Further lengths upon request)
- High quality product designed and manufactured in Germany
- Lots of accessories available



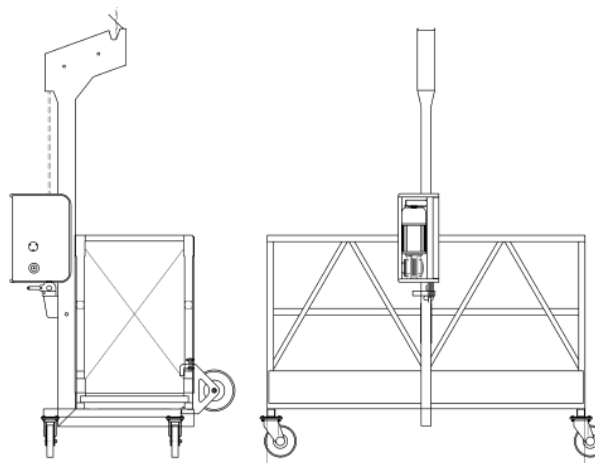
Boom DA6



Parapet clamp



Side winch support



C-bracket with winch support



Corner use/two floor

Technical data:

Type:

- Winch traction force
- Weight of winch
- Voltage
- Current input (per winch)
- Max. starting current (per winch)
- Motor speed
- Output (per winch)
- Hoisting speed
- Duty cycle (DC)
- Protective class of motor
- Noise emission values
(The measuring uncertainty constant is 4 dB (A))
- Basis for calculation
- Release speed of cable breakage safeguard

GEDA AB 450

450kg

GEDA AB 650

650kg

55kg
400V/50Hz
3.0A
approx. 14.5A
2800 1/min.
1.4kW
8m/min
60%
IP 54
L_{PA} < 85dB (A)

EN 108
approx. 20m/min

Rope:

- Nominal diameter
- Minimum breaking strength

according to EN 12385-4;
8.3mm
51.00kN