

URW-094 (0.995t x 1.5m)

The newest addition to the UNIC range is the smallest yet. At only 595mm wide and weighing 1000kg, it is the world's smallest and lightest mini crane, ideal for manoeuvring into the tightest of working areas. Once in position, the 094 is capable of lifting almost a tonne with its 5.49m long boom allowing a maximum hook height of 5.6m.



Crane Specifications

Crane capacity	capacity:	0.995t x 1.5m
Max working radius	max:	5.17m
Max lifting height	approx:	5.6m
Rope length	max:	10.5m (2 fall), 21m (1 fall)
Dimensions	folded:	1870mm (l) x 595mm (w) x 1290mm (h)
Weight	unladen:	1000kg
Point loadings	Due to the many variables involved, point loadings are only available on request	
Hook speed	approx:	8.5m/min (with 3 layers and 2 falls)
Telescopic system	boom length:	1.73 - 5.49m
	telescoping speed:	3.76m/16 seconds
	boom type:	4 section hydraulically telescoping boom, 4-sided box beam
Derricking angle/speed	approx:	0 - 78° / 5.5 seconds
Slewing angle/speed	approx:	360° (continuous) 1.5min ⁻¹ (rpm)
Traction system	drive:	hydrostatic, step-less forward and reverse
	travel speed:	0 - 2.2km/h
	gradability:	20°
	track ground length:	900mm
	track ground pressure:	36.3kPa (0.37kg/cm ²)
	track width:	150mm
Engine	manufacturer:	Mitsubishi
	fuel:	petrol (LPG dual option)
	maximum output:	5.5kW (7.5PS) / 1800min ⁻¹ (rpm)
	starting method:	electric and recoil start as standard
	tank capacity:	6 litres
Standard equipment	overwinding alarm, computer controlled intelligent voice warning system, radio remote control, intelligent throttle activation	
Optional equipment	1 fall hook block, LPG dual power, low marking tracks	

- Capacity 0.995t x 1.5m
- Total width 0.595m
- Max working radius 5.17m
- Max boom length 5.49m
- Petrol powered or LPG dual fuel
- Multi-position configurable outriggers
- Intelligent voice warning system
- Radio remote control as standard
- Intelligent throttle activation for economy and ecology

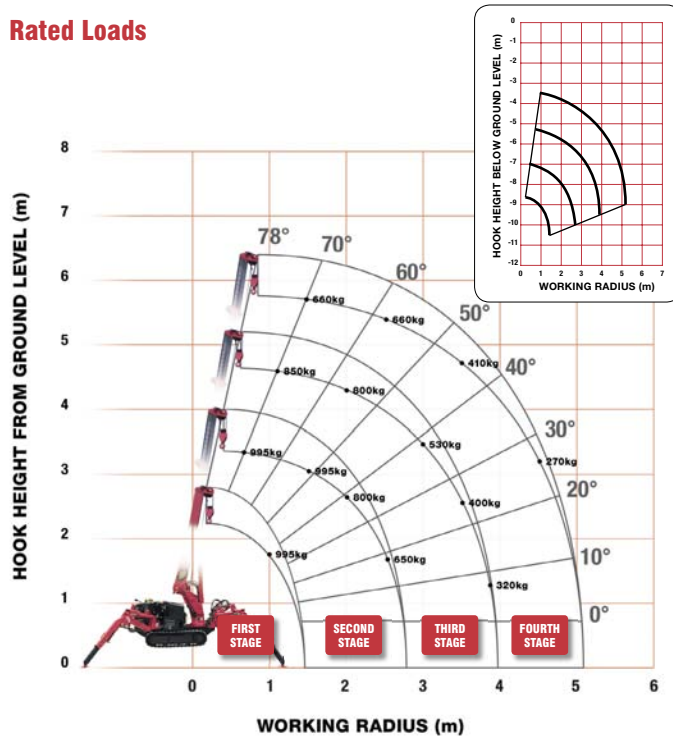


Level operation on uneven sites

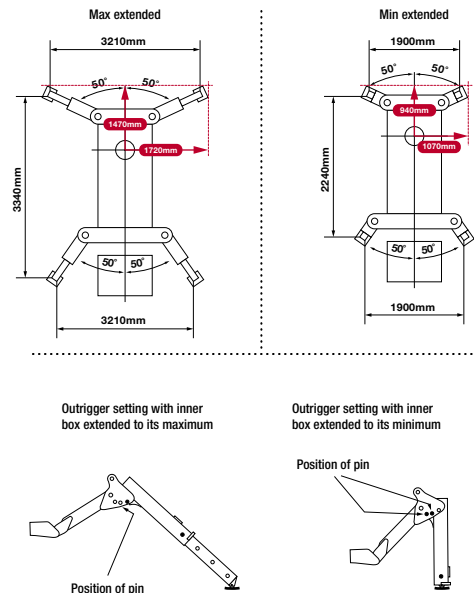


Low marking tracks

Rated Loads



Outrigger Positions



FIRST STAGE

FIRST STAGE EXTENDED 1.73M BOOM LENGTH

Working radius	m	up to 1.0	1.1	1.2	1.3	1.41
Outrigger						
Max-extended	kg	995	995	995	995	995
Min-extended	kg	800	800	750	700	650

SECOND STAGE

SECOND STAGE EXTENDED 1.73 - 3.01M BOOM LENGTH

Working radius	m	up to 1.0	1.1	1.3	1.5	2.0	2.5	2.69
Outrigger								
Max-extended	kg	995	995	995	995	800	650	580
Min-extended	kg	800	800	700	600	410	285	230

THIRD STAGE

THIRD STAGE EXTENDED 3.01 - 4.25M BOOM LENGTH

Working radius	m	up to 1.0	1.8	2.0	2.5	2.8	3.0	3.5	3.93
Outrigger									
Max-extended	kg	850	850	800	650	580	530	400	320
Min-extended	kg	500	500	410	285	215	190	145	115

FOURTH STAGE

FOURTH STAGE EXTENDED 4.25 - 5.49M BOOM LENGTH

Working radius	m	up to 2.4	2.5	2.8	3.0	3.5	4.0	4.5	5.1	5.17
Outrigger										
Max-extended	kg	660	660	580	530	410	330	270	210	200
Min-extended	kg	360	320	220	190	145	105	80	65	65

* Rated loads for the URW-094 include 15kg 2-fall hook block.



Automatic hook stow



Anti two-block system

